

# GIVING LOCAL

## *Lake County, Indiana*

Legacy Foundation's Newsletter



LEGACY  
FOUNDATION

Lake County's Community Foundation

## FEATURES

Planned Giving to Support  
Future Generations

Strengthening Community  
Across Generations

Scholar Spotlight

Lake County Local Food Fund

Annual Celebration  
Highlights

2024 - 2028 Strategic Plan

Election Reminders

Tribute Gifts

Legacy Foundation Welcomes  
New Board Members

2023 Fundholder Event  
Series

## A Planned Gift to Support Higher Education for Years to Come



Fred Newman

Fred Newman loved Lake Station and Neil Young. He valued the opportunities an education could provide. After his retirement from directing and producing local cable programming, he was active in politics and the Morse Code Club and enjoyed photography and amateur radio.

Fred came to Legacy Foundation to establish the Four Girls Scholarship Fund in 2021, just two years before

he passed. He wanted to honor the four Lake Station girls who lost their lives on October 31st, 1971, when their Sunday School bus was hit by a train at an unguarded crossing.

"He was an amazing, thoughtful, kind, considerate, and compassionate man, who firmly believed in a solid education and achieving one's dreams. He was a critical thinker and looked at situations from every perspective. He had a huge heart and willingness to help others. That will be his legacy," said Marcia Moore, Fred's partner.

During his life, Fred saw the impact of his fund on seven students from Lake Station who received the Four Girls Scholarship award. Because of a gift in his will, Fred's generosity will be remembered for many years to come.

**Legacy Foundation can help you leave a charitable legacy to support the causes that mean the most to you.**

If you would like to leave a gift to charity in your will or estate plans, contact Erica Fizer Katsepas 219-736-1880 or [efizer@legacyfdn.org](mailto:efizer@legacyfdn.org).

## GRANTEE SPOTLIGHT

# Strengthening Community Across Generations

With support from Legacy Foundation's Transform Lake County grant, the Town of Griffith Police Department is on a mission to strengthen relationships between residents of all ages, while addressing social determinants of health among town youth.

The town's Community Connections program connects at-risk high school teens, ages 13 - 18, with adult mentors. The program is designed to foster teen relationships with safe and caring adults to guide them through developing life skills, improving self-esteem, and strengthening accountability. To make sure teens are paired with a mentor that fits their personality and needs, enrolled teens complete a short assessment to identify interests, concerns, and goals.

To ensure accessibility, the program is being implemented in multiple locations throughout the Town of Griffith and is being facilitated by the Griffith Police Department Social Services Division. To learn more about the Community Connections Program, contact Erica or Halie at 219-924-7503.

Help more organizations receive a Transform Lake County Grant by making a charitable contribution to the Lake County Community Fund. Visit [legacyfdn.org](https://legacyfdn.org) or call 219-736-1880 to donate.



## Scholar Spotlight

**KIM REPPA**

**2011 Lilly Endowment Community  
Scholarship Recipient**

Legacy Foundation Donor Engagement Director, Erica, and Scholarship Administrator, Jodi, recently met with 2011 Lilly Scholar, Kim Reppa. After completing her undergrad at Purdue University, she received a Graduate Research Fellowship from the National Science Foundation and earned a Masters of Civil Engineering from Purdue with a focus in Innovation and Leadership. After graduating she served as the Director of Business Operations at a public charter school in Los Angeles specializing in bilingual, multicultural education.

Kim has since returned to Lake County with a new sense of purpose. Kim is interested in studying schools at a systems level to see how to move education forward amidst changes in student populations, funding, and more options for school choice.

# Legacy Foundation Establishes Lake County Local Food Fund to Build Capacity for Local Farmers and Address Root Causes of Food Insecurity



Food insecurity and residents' access to healthy and affordable food is directly linked to the health of our community. The Lake County Local Food Fund is a step in our journey to end hunger and promote local food access in Lake County.

The Lake County Local Food Fund will focus on addressing root causes of food insecurity, sustaining local farms, and lowering barriers to access healthy food. Legacy Foundation will work with community-based organizations and growers whose requests encompass at least one of the following elements of a resilient food system:

- Build agricultural knowledge and skills.
- Increase access to healthy foods.
- Improve facilities or productivity of a farm.
- Incentivize support of locally grown food.
- Provide technical assistance and training to farmers and growers.
- Address root causes of food insecurity.

## We're Matching Gifts \$1-for-\$1 to the Lake County Local Food Fund!

Join us in this work by supporting the Lake County Local Food Fund. Your donation will be matched by Legacy Foundation \$1-for-\$1, up to \$30,000! Visit [legacyfdn.org/food-fund](https://legacyfdn.org/food-fund) or call us at 219.736.1880 to make your tax deductible donation.



SCAN TO  
DONATE

## Share Your Harvest, Support Your Community

Farmers and landowners now have the opportunity to build a better Lake County by making a gift of grain to Legacy Foundation! Your donation will support the Lake County Local Food Fund, or you can contact us prior to making your gift to use the value of the grain to start an endowed fund in the name of your family, for a specific nonprofit organization important to you, or to support charitable causes in your community.

### An easy, tax-efficient way to support your community!



Deliver grain to the elevator.  
Legacy Foundation has an account at the Lake County Co-Op in Crown Point.

If you use another elevator, please contact us prior to the gift so we can set up an account.



Ask the elevator to transfer XX bushels to Legacy Foundation.

The gift must be from unsold grain inventory.



Legacy Foundation authorizes the sale of the grain and receives the proceeds.



You receive an acknowledgement of the transaction from us for your gift of grain.

By gifting grain to Legacy Foundation, you avoid including the sale of the grain in your farm income and taxable income is reduced. Farmers may realize savings on federal and state income tax and self-employment tax and can still deduct the costs of production.

Find out more about making a gift of grain by visiting [legacyfdn.org/gift-of-grain](https://legacyfdn.org/gift-of-grain) or contacting Erica Fizer Katsepas at [efizer@legacyfdn.org](mailto:efizer@legacyfdn.org) or 219.736.1880



# Legacy Foundation Reveals Strategic Plan and Honors Community Changemakers at Annual Celebration

On August 29, Legacy Foundation held its 31st Annual Celebration at the Dean and Barbara White Community Center. Over 200 Northwest Indiana residents, nonprofits, and community leaders gathered to celebrate 31 years of building community.

## Thank you Event Sponsors!



NORTHERN  
TRUST



BCC

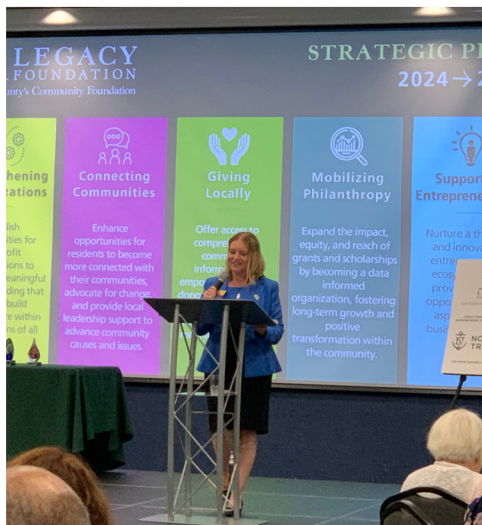
LAKE SHORE  
PUBLIC MEDIA



## Strategic Plan

During the event program, Legacy Foundation previewed its 2024 - 2028 strategic plan. The Foundation will focus its impact in five guiding pillars.

These pillars and accompanying strategies were informed by interviews, focus groups, and surveys from over 100 diverse community members.



## Strengthening Organizations

**Establish opportunities for nonprofit organizations to engage in meaningful capacity building that seeks to build infrastructure within organizations of all sizes.**

- Establish capacity building grants that focus on developing nonprofit infrastructure.
- Expand Legacy Learning Lab training and education programs.
- Launch a board training program aimed to develop the knowledge, diversity, and skills of current and potential nonprofit board members.

## Connecting Communities

**Enhance opportunities for residents to become more connected with their communities, advocate for change, and provide local leadership support to advance community causes and issues.**

- Empower community residents through skill-building opportunities.
- Provide ongoing grant opportunities to support grassroots projects led by local residents or student groups, fostering innovative ideas that address local needs and aspirations.
- Strategically invest in RiseNWI as a trusted source of nonpartisan civic engagement.



# Heart of Lake County Awards

Legacy Foundation announced the inaugural Heart of Lake County Award recipients, community leaders who use their time and talents to positively impact Lake County. The Excellence in Nonprofit Board Leadership and Community Spirit Awards were awarded based on public nomination. Each recipient received \$1,000 to donate to the organization of their choice.

**Verne P. Seehausen** was presented with the Gold Key Award, recognizing his nearly 30-year involvement with Legacy Foundation in the promotion of philanthropy across Lake County. As a CPA of over 40 years, he has worked with his clients to set up multiple endowed funds at the foundation and has established his own funds for organizations that are meaningful to him. Verne supported the Tri-Town Safety Village with his \$1,000 award.

The Excellence in Nonprofit Board Leadership Award was presented to **Calvin Bellamy** for his decades of service to Northwest Indiana nonprofit boards. His sharp attention to detail has strengthened Lake County serving nonprofit organizations in governance, financial stability, leadership, and program impact. With his award, Calvin supported LakeShore Public Media.



**Dr. Vernon G. Smith** was awarded the Community Spirit Award to honor his outstanding community contributions that have enhanced, improved, and positively affected the overall quality of life in Lake County. Current professor, state representative, and nonprofit leader, Dr. Smith has impacted the lives of thousands within Lake County. Dr. Smith donated his \$1,000 award to the African American Achievers Youth Corp.

## Giving Locally

Offer access to comprehensive community information to empower and inspire donors to support the local community by making a lasting and meaningful impact.

- Establish specific funds to identify opportunities for community members of diverse backgrounds to contribute in a way that is meaningful to them.
- Strengthen relationships with a diverse set of professional advisors.
- Expand giving opportunities to encompass innovative and convenient methods.

## Mobilizing Philanthropy

Expand the impact, equity, and reach of grants and scholarships by becoming a data informed organization, fostering long-term growth and positive transformation within the community.

- Refine grantmaking process to ensure alignment with the evolving needs of nonprofit organizations.
- Use data to understand the community challenges and the impact of Legacy funding.
- Identify strategies to enhance scholarship application rates from underrepresented schools and collaborate with organizations to support students with essays and applications.

## Supporting Entrepreneurship

Nurture a thriving and innovative entrepreneurial ecosystem that provides equal opportunities for aspiring small business owners.

- Expand NWI BizHub visibility and engagement to provide small business owners with access to services to help them grow their business.
- Create mechanism for investing in placemaking and tactical urbanism in downtown/main streets where local businesses thrive.
- Increase access to community capital through CDFI partnerships and impact investing to generate economic and social benefits in Lake County.



## ELECTION DAY IS TUESDAY, NOVEMBER 7

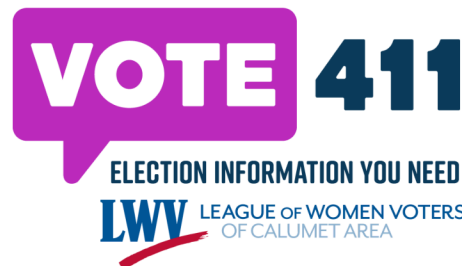
Participate in this year's election to help shape your community now and for years to come.

Municipal Elections, or local elections, include positions that impact your daily lives, including mayor, town council, clerk treasurer, and local judges. These positions are the ones that determine your community's focus and priorities, budget, local parks, and more.

### Be an Informed Voter



Visit [Legacyfdn.org/risenwi](https://Legacyfdn.org/risenwi) to learn more about Lake County's 2023 local election, including important deadlines, early voting information, VOTE411 candidate profiles, and more!



## Tribute Gifts: March 1 - August 31, 2023

### Arnulfo H. Medellin Memorial

In Memory of Arnulfo & Carmen Medellin

Donor | Joe Medellin

### Barbara A. Gross Hobart Betterment Fund

In Memory of Barbara A. Gross

Donor | Estate of Barbara A. Gross c/o  
Dennis Rosta

### Friends of Marquette Park Fund of Miller Citizens Shoreline Committee

In Memory of Samuel E. Stoffregen

Donor | Yolanda Stoffregen

### Hanover Central High School Scholarship Fund

In Memory of Eleanor F. Kutcek

Donor | Richard F. Kutcek

### Humane Indiana

In Honor of Kim Wiater

Donors | Timothy and Michelle Ulanowski

### IBEW Local Union #697 Memorial Scholarship Fund

In Memory of

Robert Bakalar      Edward Hall

Joel Bolkovatz      Dennis McDonald

James Dugan Jr.      Christopher Szara

Johnny Greene      Dan Wells

Donor | IBEW Local #697

### Joseph and Marla Dernay Future Teacher Scholarship Fund

In Memory of Alice Malsch

Donor | Julie Dilts

### Lake County Community Fund

In Memory of Dale Cobble

Donors | John and Louise Diederich

In Memory of Richard Lorenz

Donor | Timothy and Michelle Ulanowski

### Lakeshore Chamber of Commerce, Van Til/Bellamy Salute to Education

In Honor of Calvin Bellamy

Donor | Barbara Wilhelm

### Rob Gardiner Legacy Fund for Boys & Girls Club of Greater NWI

In Memory of Rob Gardiner

Donors | Charles and Colleen Gardiner

### Philippine Professionals Association Scholarship Fund

In Memory of Nancy Campos

Donors | Lauren Partan

### Sandi Kozlowski Memorial Fund

In Memory of Sandi Kozlowski

Donors |

May Drysch

Cirilo Rangel

Fran Kintzele

Deborah K. Stalmack

Ed Kozlowski

### Shirley Heinze Land Trust Fund

In Memory of David Bonander

Donors | Nancy and Allen Johnson



# Legacy Foundation Welcomes New Board Members

## BOARD LEADERSHIP



Alfredo is a Partner at Burke Costanza & Carberry LLP, the chair of its immigration practice group, and a member of the firm's litigation practice group. He earned his undergraduate degree in Political Science from Purdue University Northwest and earned his law degree from Valparaiso University Law School. Alfredo is an active member of the Lake County Bar Association, and in 2022, the Indiana General Assembly passed House Resolution No. 30 recognizing Alfredo as being the first Latino President of the Lake County Bar Association.

Lisa Goodnight is the Vice Chancellor for Institutional Advancement and Chief of Staff at Purdue University Northwest. In this role, she is responsible for fundraising, marketing and communications, and alumni engagement. As a faculty member and administrator at Purdue Northwest for over 25 years, Lisa has made contributions in teaching, scholarship, and service. She earned her undergraduate degree in Communications from Purdue University Northwest, a Masters in Political Communication from Northern Illinois University, and a Doctoral degree in Communication from Purdue University in West Lafayette.



Pam is the Chief Financial Officer for the NWI Region of Franciscan Health. She is also an adjunct professor for the University of St. Francis in Joliet, IL, teaching healthcare management, leadership, and finance. Pam earned her Bachelor of Business Administration degree with majors in Accounting and Finance from the University of Wisconsin - Madison and her Master of Business Administration degree with an emphasis in healthcare from the University of Phoenix. She is an active member of the Healthcare Financial Management Association (HFMA), and most recently she was named Vice-Chair of HFMA's National Board of Examiners.

In spring 2019, Chelsea began operating her PR Consulting firm, C WHITT PR, where she and her team work with local and national businesses and organizations. Chelsea received her undergraduate degree in Journalism from Howard University, and her Masters in Organizational Communications from Purdue University Northwest. She is a proud Gary, IN native with a communications career that spans more than 25 years. Most recently, Whittington served as the Director of External Affairs and Special Events for the Chicago Urban League. She continues to serve as an adjunct professor at Indiana University Northwest teaching courses in Communications, Computers and Social Networking.



Sherri was named President and CEO of the NWI Regional Development Authority (RDA) in 2021. She has been with the RDA since its inception in 2006 and provides leadership to maximize the economic development and redevelopment potential throughout the region, increase job creation and develop greater connectivity to Chicago. She holds a Bachelor's in Political Science and a Master's in Education from Purdue University Northwest. A lifelong Northwest Indiana resident, Sherri is an active member of her community. She volunteers her time with various nonprofit organizations and is an active member of her local Parent Teacher Organization.





Lake County's Community Foundation

370 E. 84th Drive  
Suite 100  
Merrillville, IN 46410

Return Service Requested

legacyfdn.org | legacy@legacyfdn.org | 219-736-1880



## Legacy Foundation Fundholder Coffee and Conversation Series

Legacy Foundation is excited to bring together Foundation Fundholders for unique conversations to provide fund updates, discuss the Foundation's new strategic plan, and more! All events will take place at Legacy Foundation's Office.

### Save the Date!

**Agency Funds: Nonprofit Capacity Building and Board Development**  
Monday, November 6 | 3:30 PM - 4:30 PM

**Education and Scholarships**  
Tuesday, November 7 | 9:00 AM - 10:00 AM

**Entrepreneurship and Economic Development**  
Tuesday, November 14 | 9:00 AM - 10:00 AM

**RiseNWI and Community Engagement**  
Wednesday, November 15 | 9:00 AM - 10:00 AM



**Save the Date**

**LEGACY FOUNDATION  
HOLIDAY OPEN HOUSE**

Join us for an afternoon of  
holiday cheer and light  
refreshments!

Tuesday, December 19  
4 PM - 6 PM

Legacy Foundation Office  
Merrillville, IN